

30kVA / 3Φ

PRL. V	AFP #	Taps	BIL	HIPOT	FUSE RATING*
13800	460406V	±7 1/2	95	34	5E
13200	460408V	±7 1/2	95	34	5E
12470	460410V	±7 1/2	95	34	5E
12000	460412V	±7 1/2	95	34	5E
8320	460414V	±7 1/2	95	34	10E
7620	460416V	±7 1/2	95	34	10E
7200	460418V	±7 1/2	95	34	10E
4800	460420V	±7 1/2	60	19	10E
4160	460422V	±7 1/2	60	19	15E
2400	460424V	±7 1/2	60	19	20E
13800	460407V	±(2) 1/2	95	34	5E
13200	460409V	±(2) 1/2	95	34	5E
12470	460411V	±(2) 1/2	95	34	5E
12000	460413V	±(2) 1/2	95	34	5E
8320	460415V	±(2) 1/2	95	34	10E
7620	460417V	±(2) 1/2	95	34	10E
7200	460419V	±(2) 1/2	95	34	10E
4800	460421V	±(2) 1/2	60	19	10E
4160	460423V	±(2) 1/2	60	19	15E
2400	460425V	±(2) 1/2	60	19	20E

* Based on NEC transformer overcurrent protection, Specific applications may require other ratings.

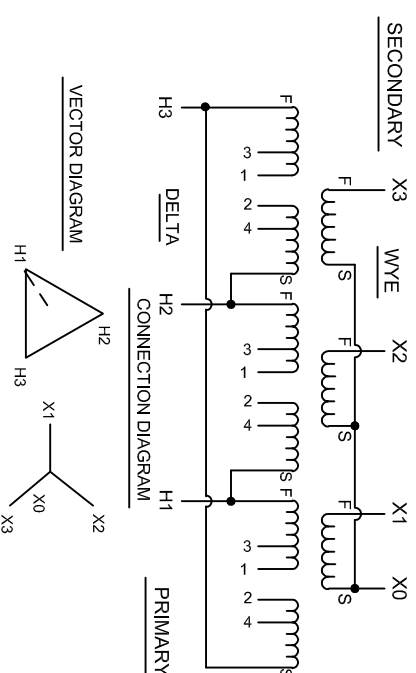
PHASE: 3
FREQUENCY: 60 Hz
INSULATION CLASS: 185°C
TEMPERATURE RISE: 115°C
POLARITY: SUBRACTIVE
APPROXIMATE WEIGHT: 600 LBS.
PRIMARY TAP CONNECTIONS: + Voltage % TAP ON HI-H2 JUMPER x-x (SEE TABLE)
 NOMINAL ON HI-H2 JUMPER 2-3 OR 3-4
 - Voltage % TAP ON HI-H2 JUMPER x-x (SEE TABLE)

SECONDARY CONNECTIONS: 208V L-L CONNECT X1, X2, X3
 120V WYE CONNECT X0-X1, X0-X2, X0-X13

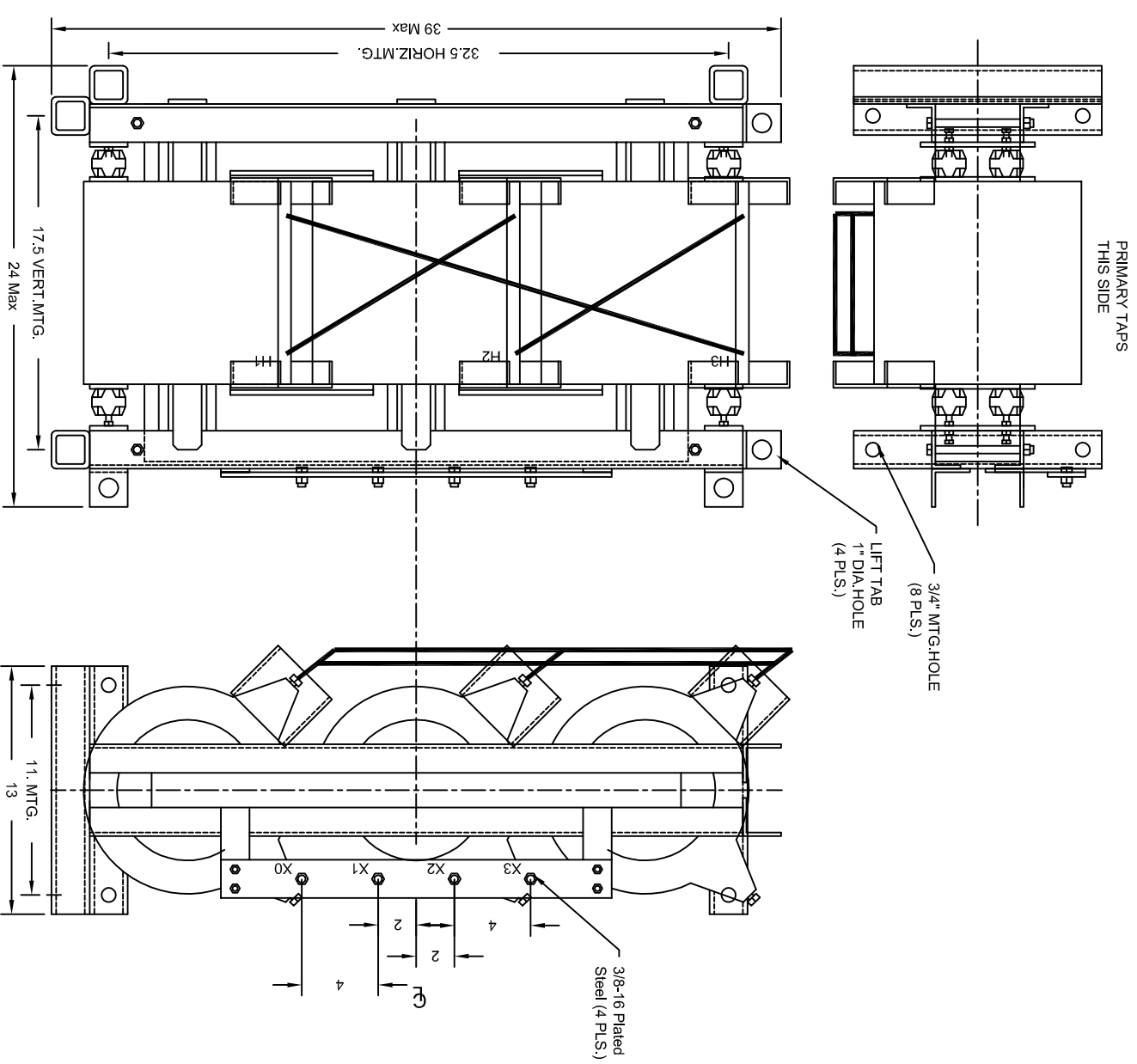
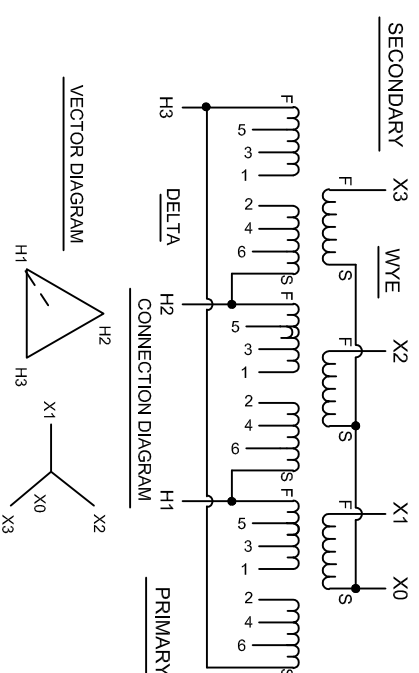
Note:

- 1) Dimensions are for maximum and subject to change. Consult factory for actual dimensions.
- 2) Thermal Rating: 30kVA based on 30°C ambient, @ 55°C ambient power is limited to 26.7kVA.
- 3) Addition of fan cooling to transformer increases power rating by 33%.
- 4) High voltage coil uses vacuum cast epoxy insulation system
- 5) Low voltage coil impregnated with polyester resin insulation system
- 6) Standard product offered unfused
- 7) Core is constructed with low loss grain oriented electrical steel
- 8) Custom voltages and BIL requirements are available

±7.5% Tap Arrangement



±2.5% Tap Arrangement



TYPICAL MEASUREMENTS - CAN BE MODIFIED TO CUSTOMER REQUIREMENTS
CONTACT FACTORY FOR ALL CUSTOM REQUIREMENTS

Sales generated

<input type="checkbox"/> APPROVED		<input type="checkbox"/> APPROVED AS NOTED		<input type="checkbox"/> REJECTED AND RESUBMIT	
DATE: _____ BY: _____		DATE: _____ BY: _____		DATE: _____ BY: _____	
Epoxy/Cast 30kVA 5.15kV 3Phase 208V Outline from 460507V/G		A F P TRANSFORMERS, CORP. A UNITED CAPITAL COMPANY		TITLE: 5kV to 15kV Class - 30kVA 3Φ SCHEMATIC AND OUTLINE	
TOLERANCE		MATERIAL		FINISH	
DWYBY	CHECKED	APPROVED	SCALE	REV.	
IS	DATE	DATE	NTS	1 OF 1	
021121			SHEET	30kVA / 15kV / 3Φ	