

45kVA / 3Φ

PRI. V	AFP #	Taps	BIL	HIPOT	FUSE RATING*
13800	460506V	±7 1/2	95	34	7E
13200	460508V	±7 1/2	95	34	7E
12470	460510V	±7 1/2	95	34	7E
12000	460512V	±7 1/2	95	34	7E
8320	460514V	±7 1/2	95	34	15E
7620	460516V	±7 1/2	95	34	15E
7200	460518V	±7 1/2	95	34	15E
4800	460520V	±7 1/2	60	19	15E
4160	460522V	±7 1/2	60	19	15E
2400	460524V	±7 1/2	60	19	25E
13800	460507V	±(2)2 1/2	95	34	7E
13200	460509V	±(2)2 1/2	95	34	7E
12470	460511V	±(2)2 1/2	95	34	7E
12000	460513V	±(2)2 1/2	95	34	7E
8320	460515V	±(2)2 1/2	95	34	15E
7620	460517V	±(2)2 1/2	95	34	15E
7200	460519V	±(2)2 1/2	95	34	15E
4800	460521V	±(2)2 1/2	60	19	15E
4160	460523V	±(2)2 1/2	60	19	15E
2400	460525V	±(2)2 1/2	60	19	25E

* Based on NEC transformer overcurrent protection. Specific applications may require other ratings.

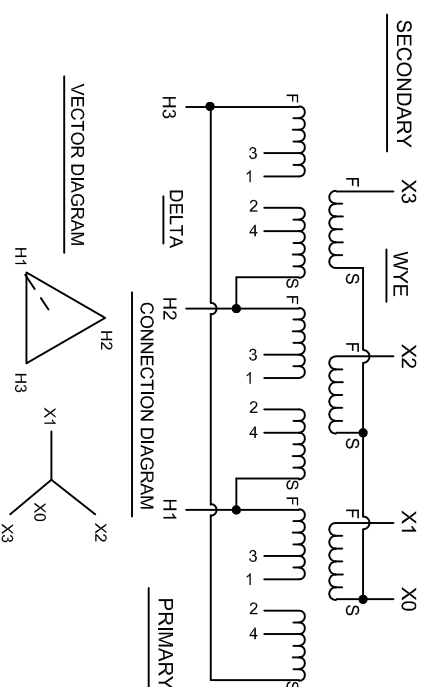
PHASE: 3
FREQUENCY: 60 Hz
INSULATION CLASS: 185°C
TEMPERATURE RISE: 115°C
POLARITY: SUBTRACTIVE
APPROXIMATE WEIGHT: 690 LBS.
PRIMARY TAP CONNECTIONS: + Voltage %, TAP ON HI-H2 JUMPER x-x (SEE TABLE)
 NOMINAL ON HI-H2 JUMPER 2-3 OR 3-4
 - Voltage % TAP ON HI-H2 JUMPER x-x (SEE TABLE)

SECONDARY CONNECTIONS: 208V L-L CONNECT X1, X2, X3
 120V WYE CONNECT X0-X1, X0-X2, X0-X13

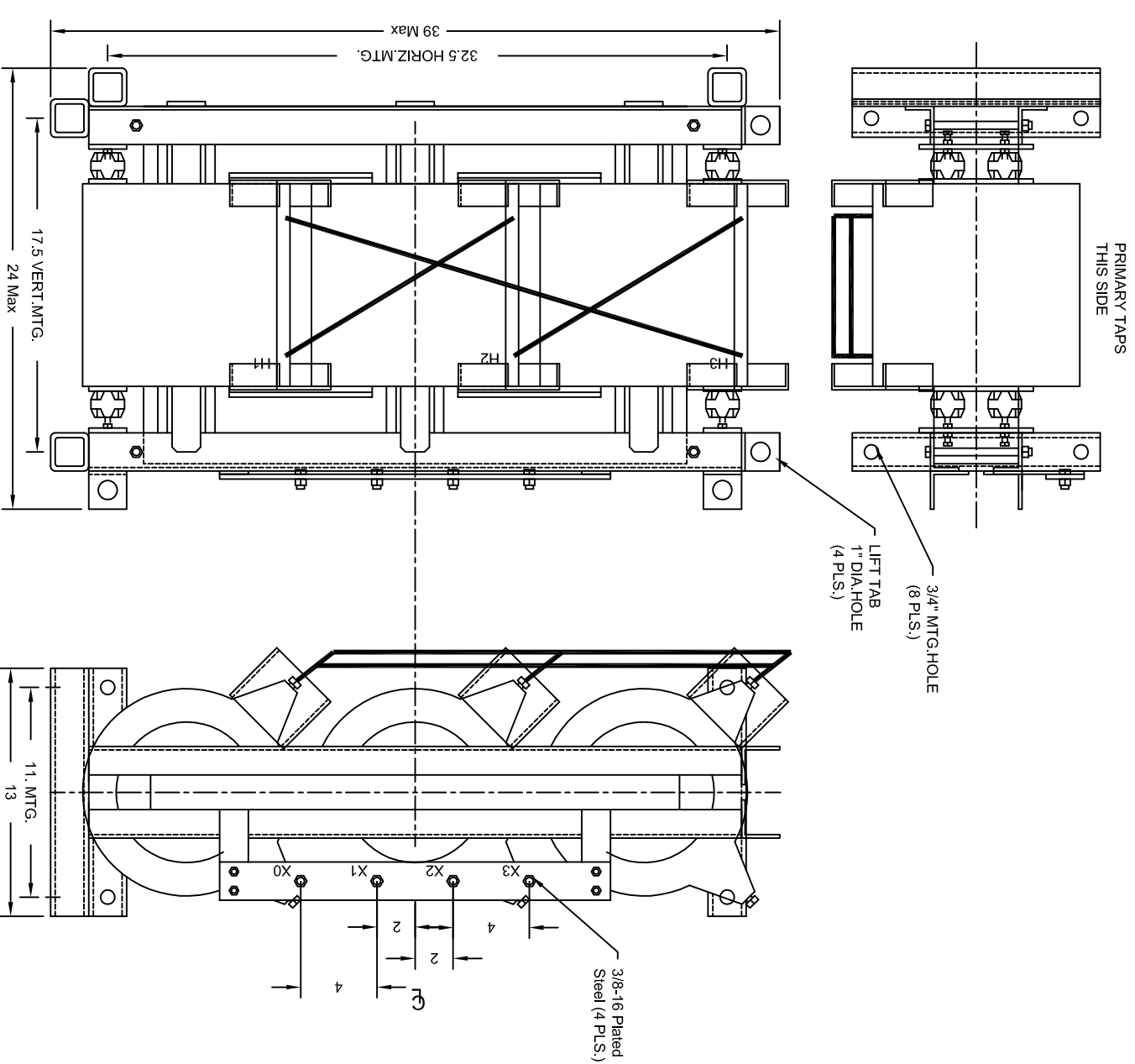
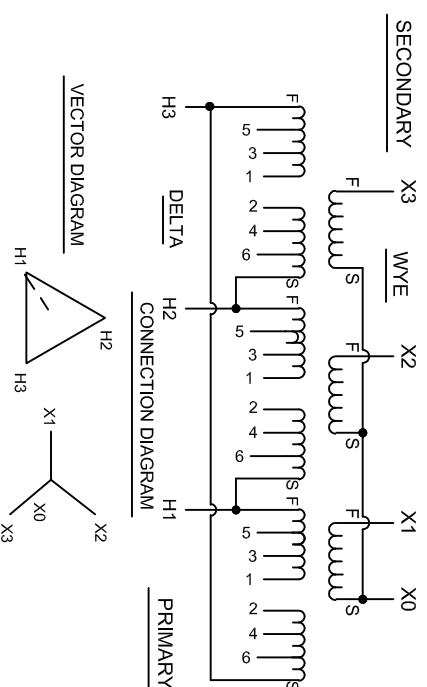
Note:

- 1) Dimensions are for maximum and subject to change. Consult factory for actual dimensions.
- 2) Thermal Rating: 45kVA based on 30°C ambient, @ 55°C ambient power is limited to 38.6kVA.
- 3) Addition of fan cooling to transformer increases power rating by 33%.
- 4) High voltage coil uses vacuum cast epoxy insulation system
- 5) Low voltage coil impregnated with polyester resin insulation system
- 6) Standard product offered unfused
- 7) Core is constructed with low loss grain oriented electrical steel
- 8) Custom voltages and BIL requirements are available

±7.5% Tap Arrangement



±2.5% Tap Arrangement



TYPICAL MEASUREMENTS - CAN BE MODIFIED TO CUSTOMER REQUIREMENTS
CONTACT FACTORY FOR ALL CUSTOM REQUIREMENTS

Sales generated

<input type="checkbox"/> APPROVED		<input type="checkbox"/> REJECTED AND RESUBMIT	
<input type="checkbox"/> APPROVED AS NOTED		<input type="checkbox"/> DATE: _____ BY: _____	
TITLE: 5kV to 15kV Class - 45kVA 3Φ SCHEMATIC AND OUTLINE TOLERANCE: _____ MATERIAL: _____ FINISH: _____			
DW/BN/VS: _____ DATE: 021121		CHECKED: _____ DATE: _____	
APPROVED: _____ DATE: _____		SCALE: NTS SHEET: 1 OF 1	
EpoxyCast 45kVA 5 15kV 3Phase 208v Outline from 460507V/G		AFP TRANSFORMERS, CORP. A UNITED CAPITAL COMPANY	
DATE: _____ BY: _____		REV: -	